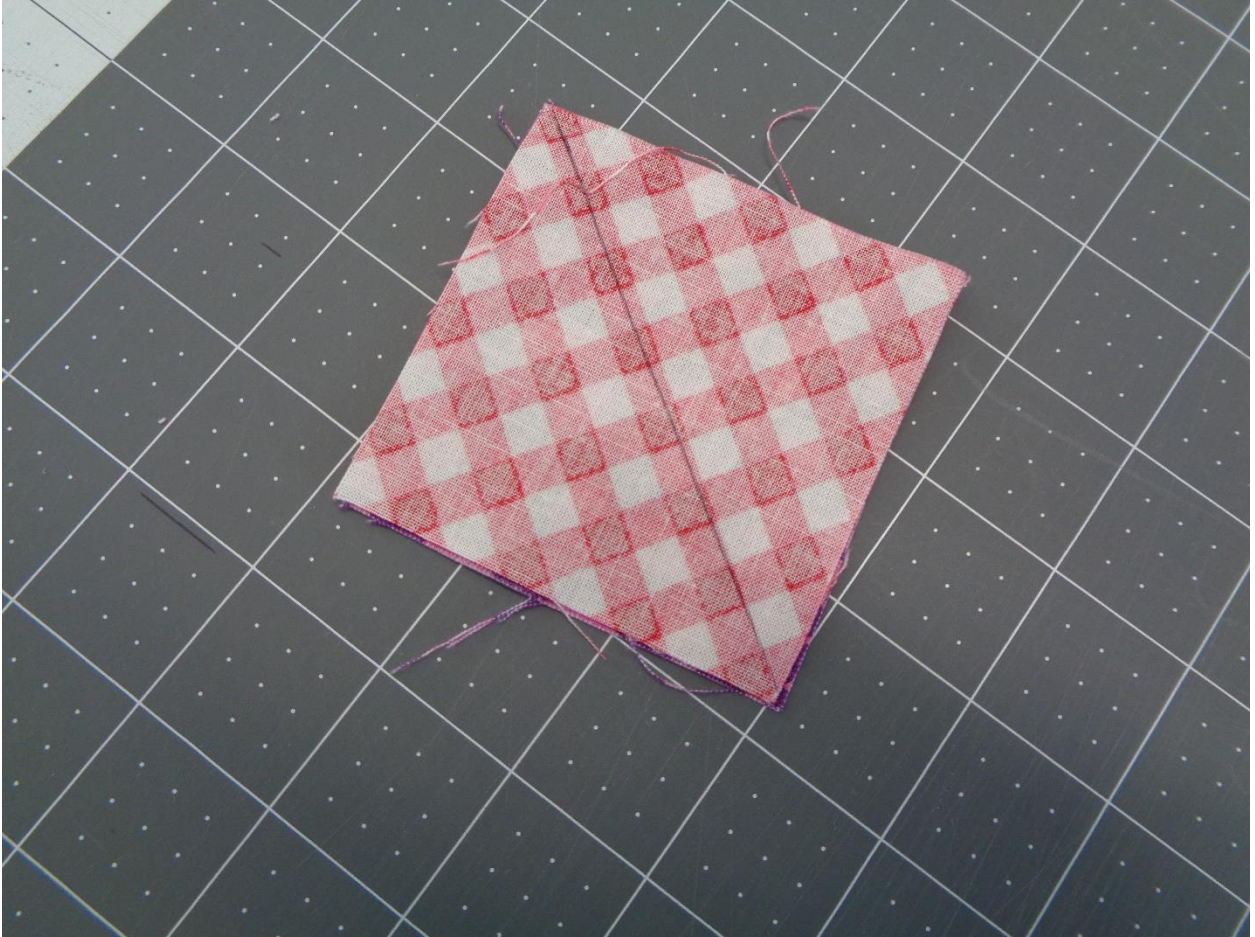
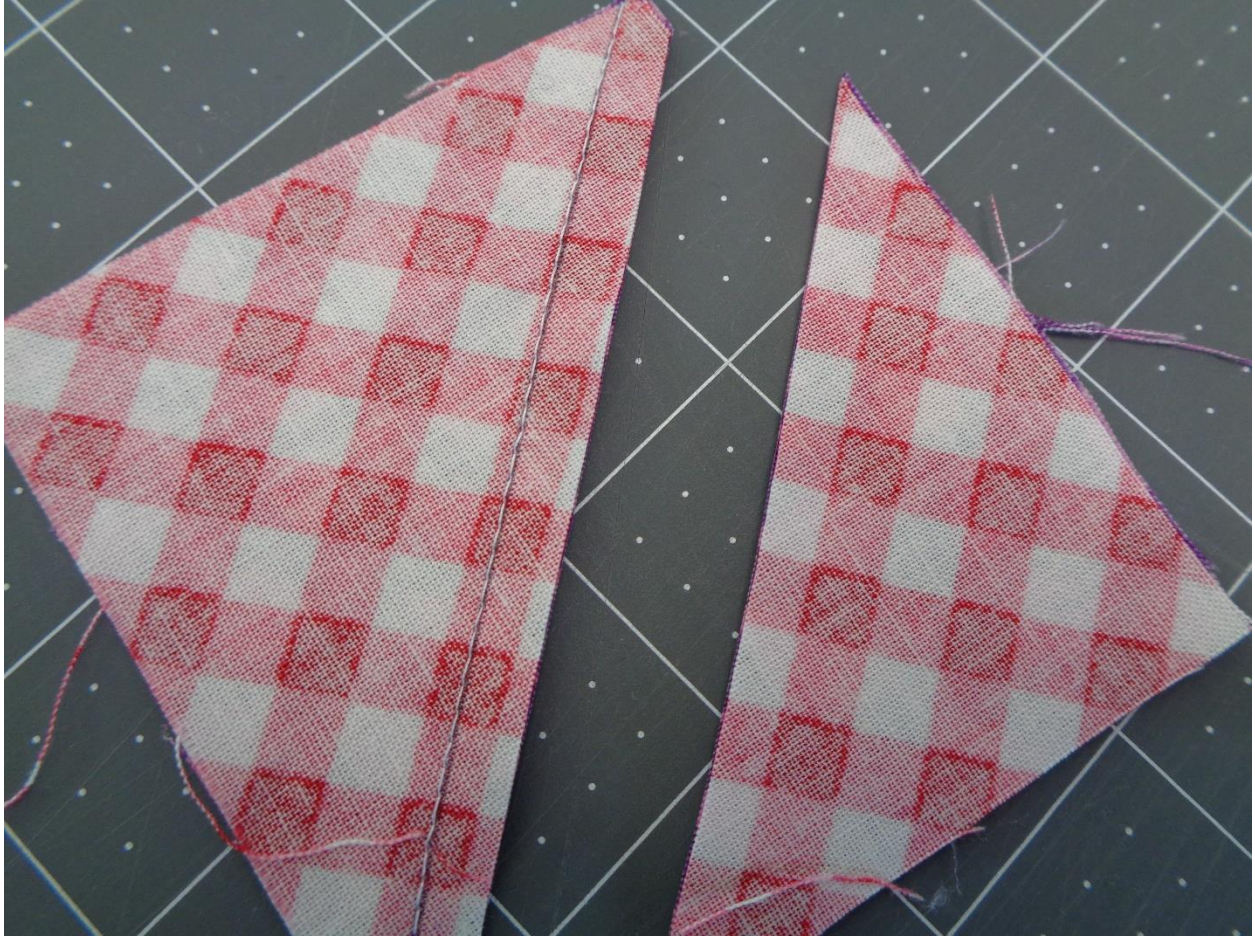


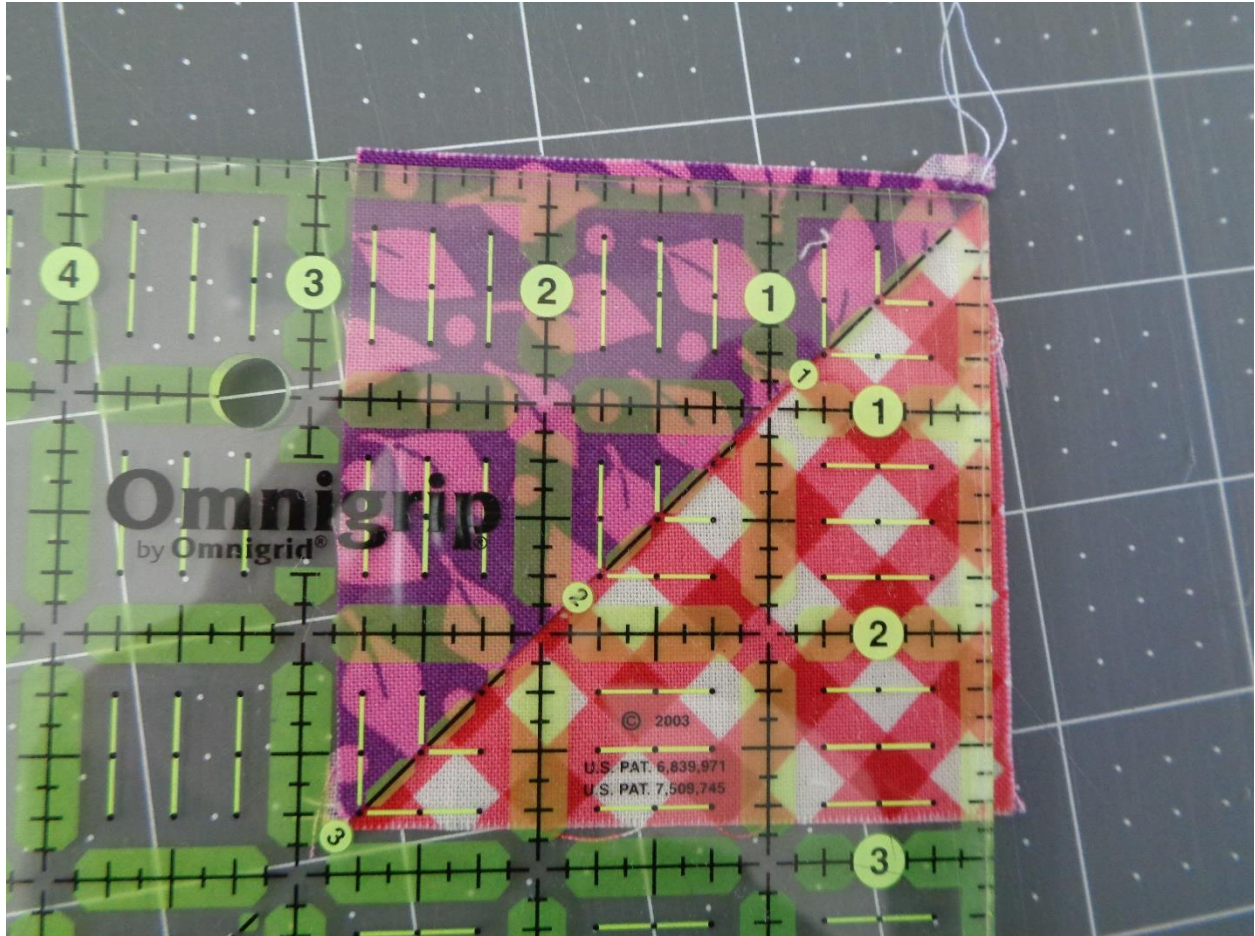
Half Square Triangles



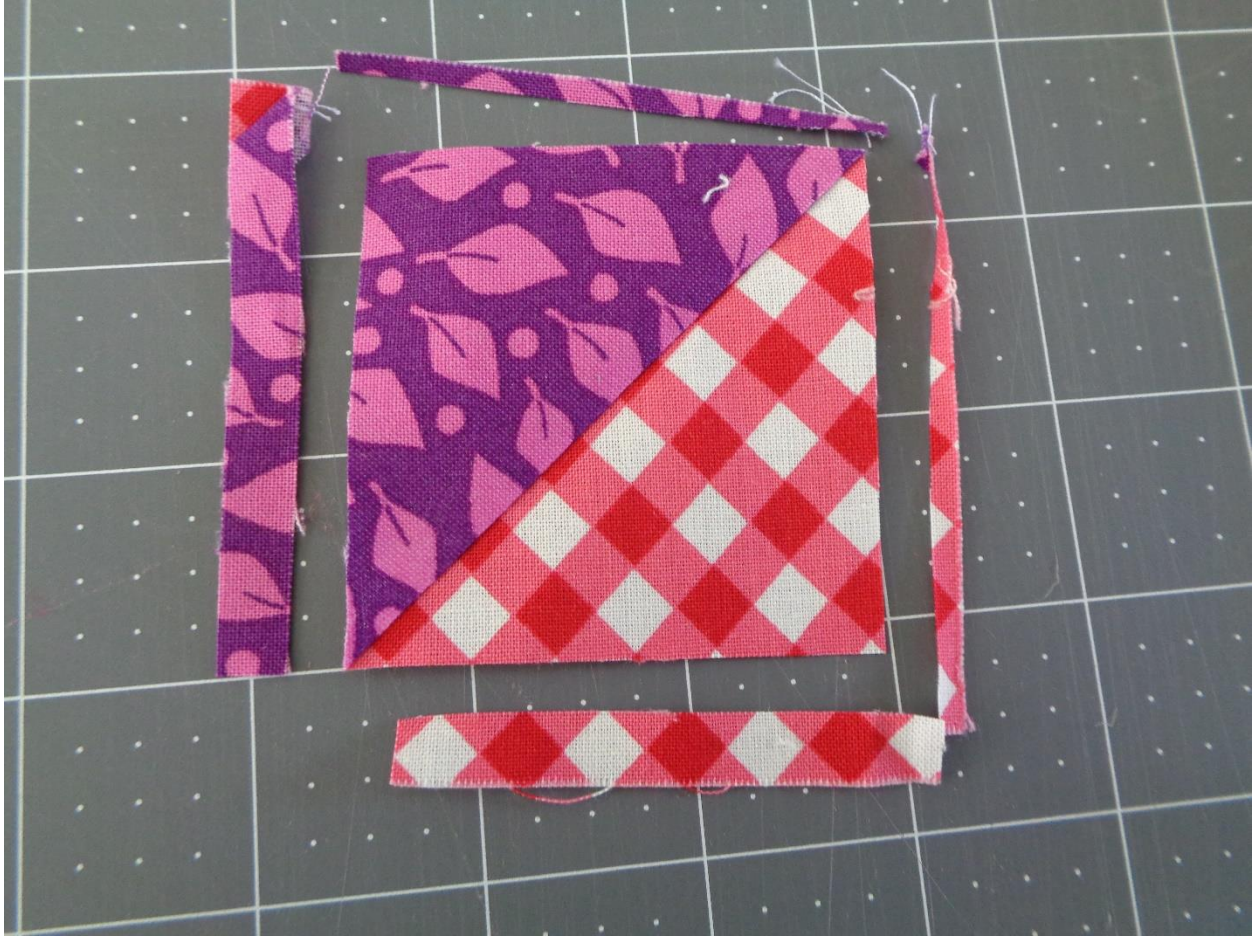
According to the directions cut 2 squares and layer them right sides together. Draw a diagonal line on the back of one as seen above.



Sew right on the line and cut a quarter inch seam allowance as seen above. You can save the extra triangles or throw them out.



Press the square open, pressing to the dark fabric. Use your ruler and place the diagonal line on the diagonal line of the fabrics.



Trim to your desired size, or size in the directions. You will have a perfect half square triangle block.

Note: There is some waste to this, but I feel a perfect size block is worth it and will save you a lot of frustration.